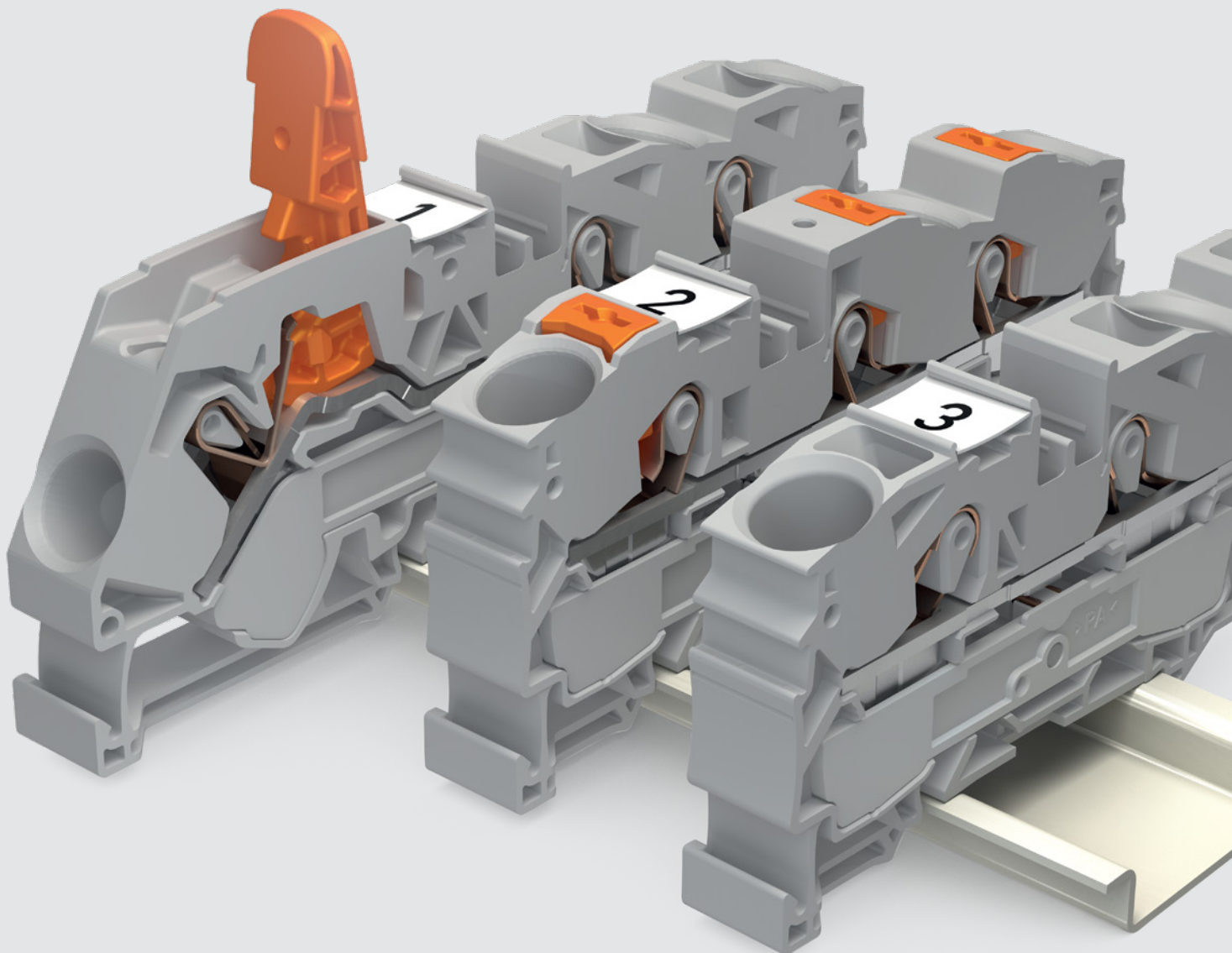




WAGO Rail-Mount Terminal Blocks TOPJOB® S

Three Ways to Wire!



WAGO Rail-Mount Terminal Blocks TOPJOB® S with Levers

Applications

- Power supply
- Simultaneous connection of multi-core sheathed cables
- Frequent rewiring on the field side

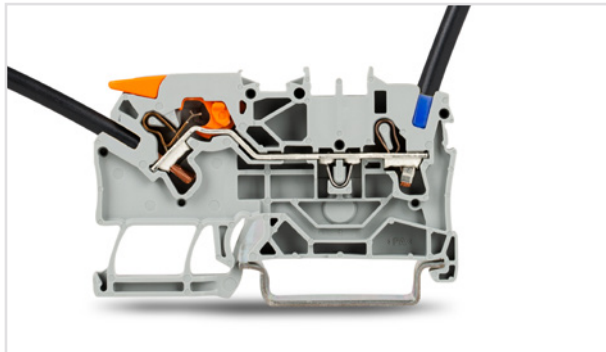
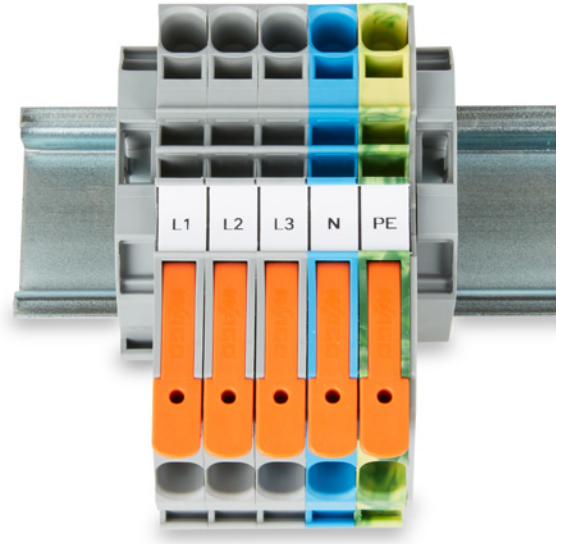
Through and Ground Conductor Terminal Blocks with Levers and Push-in CAGE CLAMP®

2102 Series | 0.25 ... 2.5 (4) mm²

2106 Series | 0.5 ... 6 (10) mm²

2110 Series | 0.5 ... 10 (16) mm²

2116 Series | 0.5 ... 16 (25 ("f-st") mm²



Your Benefits:

- Intuitively connect/disconnect all conductor types by hand.
- The lever stays open, freeing both hands for wiring.
- Even difficult-to-bend conductors are easily connected through the side conductor entry.

Accessories Suitable for All Actuation Variants with

Jumper System



Push-In Type Jumper Bar

E.g., 2000 ... 2002 Series

2- to 10-way,

1 to 3 up to 1 to 10



Adjacent Jumper for Continuous Commoning

2002 Series

2- and 5-way



Staggered Jumper,

2002 Series

2- to 12-way

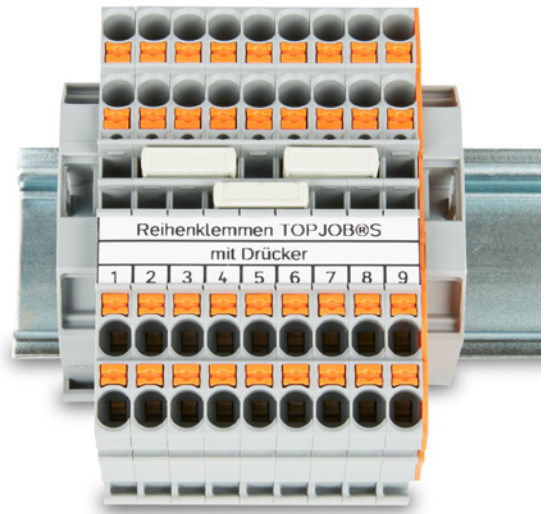
WAGO Rail-Mount Terminal Blocks TOPJOB® S with Push-Buttons

Applications

- A push-button is required in the specification.
- Other components with push-button actuation are used.

Through and Ground Conductor Terminal Blocks with Push-Buttons and Push-in CAGE CLAMP®

- 2200 Series | 0.14 ... 1 (1.5) mm²
- 2201 Series | 0.25 ... 1.5 (2.5) mm²
- 2202 Series | 0.25 ... 2.5 (4) mm²
- 2204 Series | 0.5 ... 4 (6) mm²
- 2206 Series | 0.5 ... 6 (10) mm²
- 2210 Series | 0.5 ... 10 (16) mm²
- 2216 Series | 0.5 ... 16 (25 ("f-st") mm²

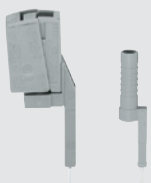


Your Benefits:

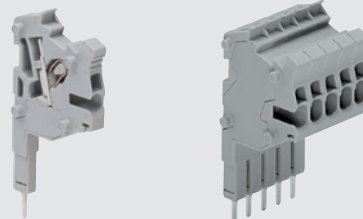
- Use any standard hand tool.
- The orange color highlights the actuator and provides a perfect overview.
- The push-button has become a distinguishing feature worldwide and is therefore ideal for in-the-field wiring.

thin the Range of TOPJOB® S Rail-Mount Terminal Block

Test Plug Adapter, Connectors



Test Plug Adapter and Testing Tap



Connector and Connector Strip

- for jumper contact slot, snaps together, 2 to 10-pole
- 2000 Series 1 (1.5) mm² / 2001 Series 1.5 (2.5) mm² / 2002 Series 2.5 (4) mm²
 - 2004 / 2006 / 2010 / 2016 Series 4 (6) mm²

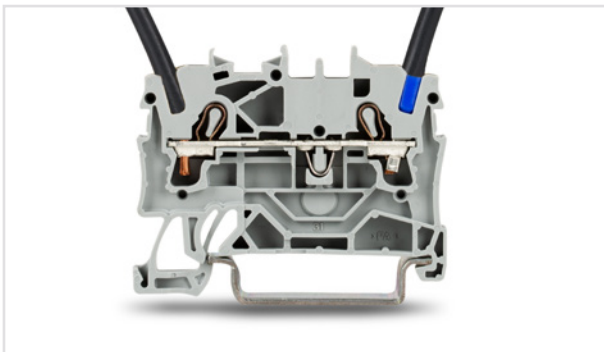
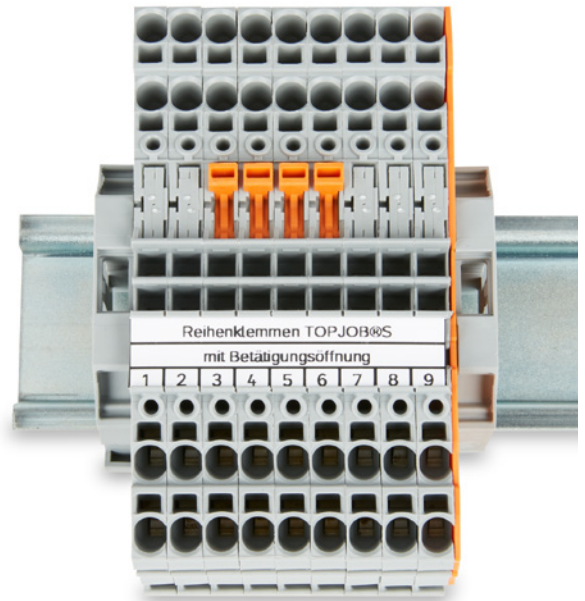
WAGO Rail-Mount Terminal Blocks TOPJOB® S with Operating Slots

Applications

- Ideal for factory wiring
- Can be used anywhere, proven connection technology/ no need to get used to it

The rail-mount terminal blocks with operating slots feature a wide and flexible product range:

- Single-deck terminal blocks with a large cross-section range: 0.14 ... 25 mm²
- Double- and triple-deck terminal blocks
- Sensor/actuator terminal blocks
- Terminal blocks for electric motor wiring
- Transformer terminal blocks
- Disconnect and test terminal blocks
- Other variants



Your Benefits:

- The tool remains in the operating slot – both hands are free for wiring.
- After insertion, the operating tool marks the clamping point and keeps it open.

Examples – Examples

Marking Accessories



Device Marking

Type labels



Cable and Conductor Markers

Conductor markers



Terminal Block Marking

Marking strips
WMB Inline

WAGO Configuration Software Smart Designer

Working directly online with the software, now in HTML5, means constantly updated data and no local installation. Planned terminal strips can be designed automatically and in 3D in the Smart Designer Configuration Software via interfaces to various CAE tools (e.g. EPLAN, WS CAD). Inconsistencies and errors can be quickly identified using the "plausibility check" function.



WAGO Marking Software Smart Script

Your Benefits:

- Modern design and intuitive workflow
- Professional marking of terminal blocks, labels, type plates and conductor markers
- Streamlined data interface to Smart Designer, EPLAN, Microsoft Excel, CSV

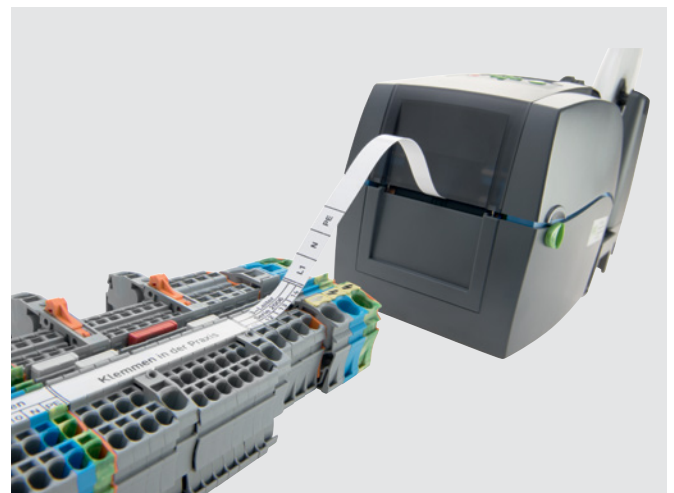
The software for any control cabinet marking application is inherently clear and intuitive to use. It is developed to pair with the compact WAGO Thermal Transfer Smart Printer and a broad selection of labels, type plates, push-button markers, etc.



WAGO Thermal Transfer Smart Printer

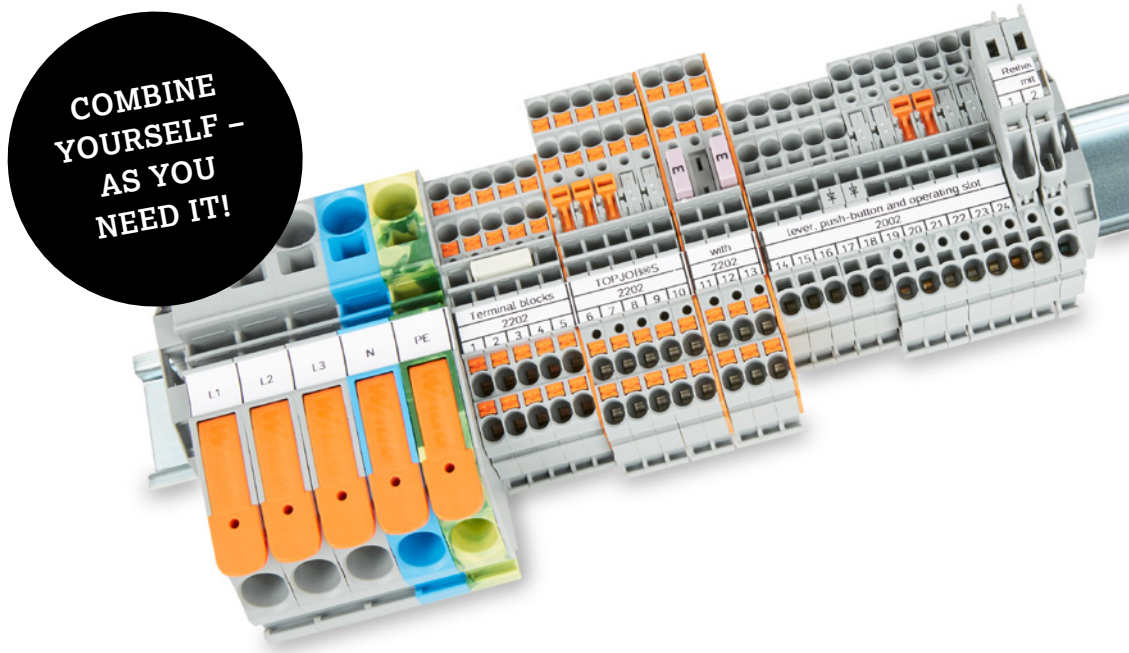
Your Benefits:

- Low purchase costs
- Easy commissioning
- Small and compact
- Durable processing, smear and scratch-resistant



Features and Advantages

Features/Advantages	Actuation Type		
	Operating Slot	Push-Button	Lever
Intuitive operation		✓	✓
Both hands free	✓		✓
Push-in CAGE CLAMP® termination	✓	✓	✓
Type of tool	Operating tool	Any	No tool required
Contact quality	✓	✓	✓
For every application	✓	✓	✓
Safety reserves (Current carrying capacity)	✓	✓	✓
One range of jumpers for all	✓	✓	✓
One marking system for all	✓	✓	✓



WAGO Kontakttechnik GmbH & Co. KG

Postfach 2880 · D-32385 Minden
 Hansastraße 27 · D-32423 Minden
info@wago.com
www.wago.com

Headquarters +49 (0)571/ 887 - 0
 Sales +49 (0)571/ 887 - 44 222
 Orders +49 (0)571/ 887 - 44 333
 Fax +49 (0)571/ 887 - 844 169

WAGO is a registered trademark of WAGO Verwaltungsgesellschaft mbH.

“Copyright – WAGO Kontakttechnik GmbH & Co. KG – All rights reserved. The content and structure of the WAGO websites, catalogs, videos and other WAGO media are subject to copyright. Distribution or modification of the contents of these pages and videos is prohibited. Furthermore, the content may neither be copied nor made available to third parties for commercial purposes. Also subject to copyright are the images and videos that were made available to WAGO Kontakttechnik GmbH & Co. KG by third parties.”